

162 E. Midland Avenue • Winder, Georgia 30680 • 770.868.1423 • FAX 770.868.1325

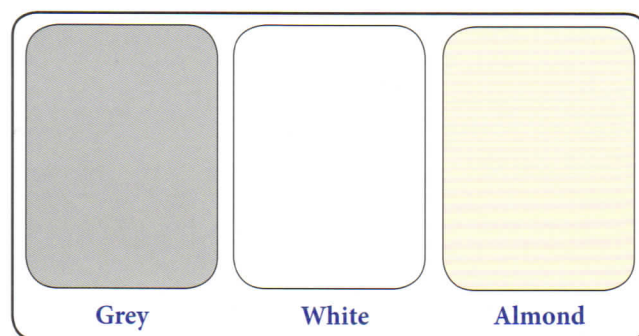
## NOW IN STOCK

High Pressure Plastic Laminate Toilet Compartments  
At Metal Toilet Compartment Prices!

### Atlanta Sunbelt Products Announces the Sunlight Series

#### The Toilet Compartments Feature:

- Strong Die-cast Hardware — Heavy Duty, Chrome Plated
- High Pressure Plastic Laminate — Resists Dents and Graffiti
- Floor Mounting with Anti Grip Aluminum Head rail — For a Strong Durable Job
- Easy Maintenance — Cleans with Common Solvents and Detergents
- Several Popular Colors Available — Neutral Colors to Compliment Public Restrooms
- Materials To Meet Handicap Codes — Many Sizes in Stock
- Can Replace Any Existing Situation — Matches Various Layouts with Ease
- All Materials For A Complete Installation — Panels, Doors, Pilasters, Brackets, Door Hardware, Overhead Bracing, and Necessary Fasteners Included



Warehouse stock of plastic laminate toilet compartments in several popular colors that will compliment any restroom scheme.

#### Specifications

The laminate is high pressure vertical grade, bonded to a high density multilayered particle board core. All plastic laminate is bonded to the core with approved adhesive, under controlled temperature and pressure.

Doors are pre-notched for concealed gravity type hinges.

Panels and doors have a finished thickness of 7/8 inch, pilasters have a finished thickness of 1-1/4 inch.



#### An Atlanta First

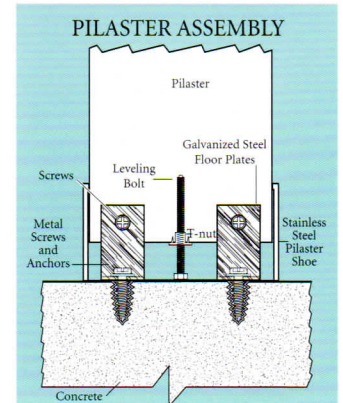
— and the first time in the United States that plastic laminate toilet compartments of this quality are offered at these prices — **A Real Value** — Call 770.868.1423 today for further information.



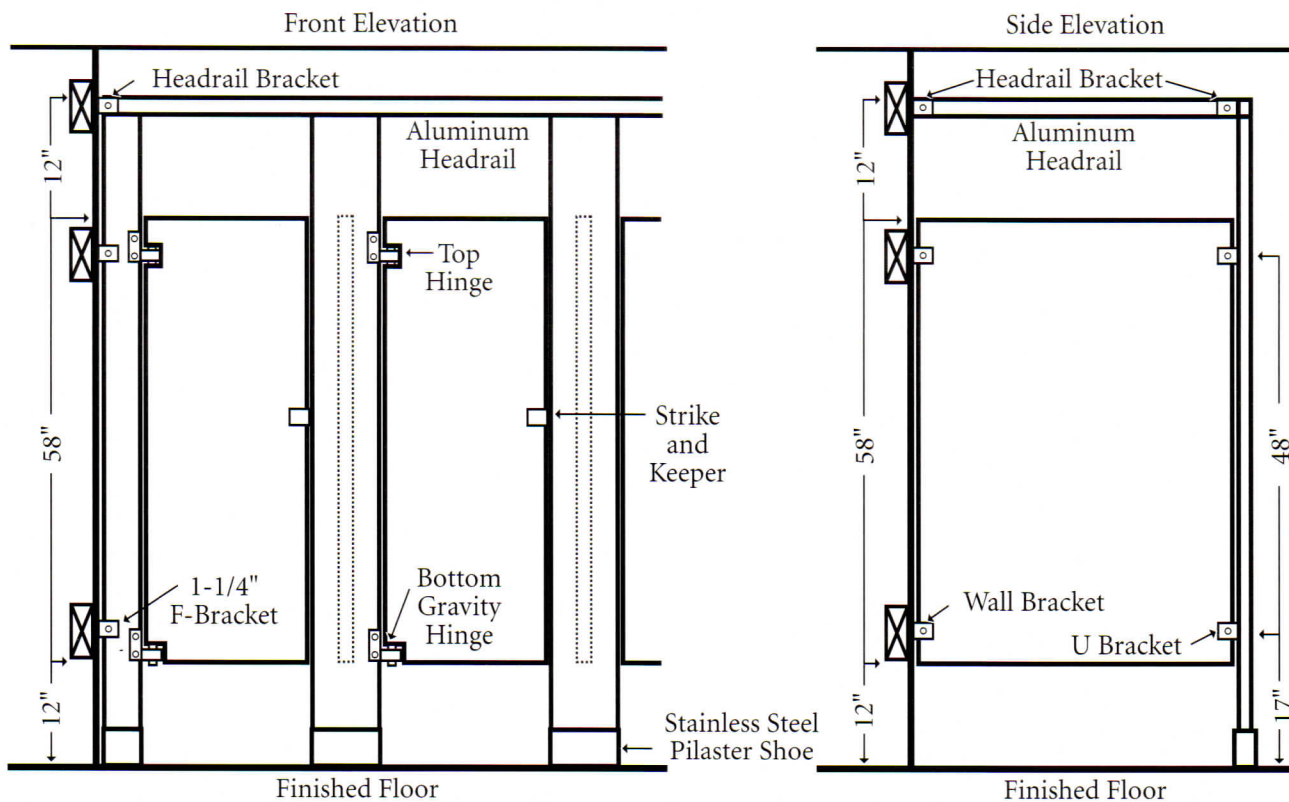


## Sun Set (overhead braced)

- This type compartment is recommended for all alcove installations.
- Check location of overhead light fixtures, especially in rooms with 7'6" ceiling heights because pilasters are 7'0" high and often clash with suspended light fixtures.
- This is the most rugged style partition and is recommended for areas where rough treatment may be expected.
- Anti-grip type headrail is now standard on all partitions with overhead braces.



## FLOOR MOUNTED – OVERHEAD BRACED



In addition to our stock compartments, we offer a full line of made to order toilet compartments in over 200 colors, phenolic toilet compartments and shower stalls, and continuous hardware.

## ATLANTA SUNBELT PRODUCTS

162 E. Midland Avenue • Winder, Georgia 30680

770.868.1423 • FAX: 770.868.1325