

Phenolic Lockers

Traditional &
Traditional Plus Collections





TRADITIONAL PHENOLIC LOCKERS

Phenolic Lockers are the material of choice when a high degree of design flexibility is desired or where durability and strength are required. These lockers are fabricated to stand the test of time. The dense components, combined with stainless steel fasteners, stand up to the most extreme conditions of moisture and humidity. Phenolic is impact, water and corrosion

resistant, and does not support bacteria. The superior construction and materials used in the locker system make it adaptable to all types of facilities, including health clubs, country clubs and executive washrooms. Phenolic lockers can easily be customized. Now available in color-thru phenolic colors upon request.

STANDARD FEATURES

- 1/2" face, 10 colors, Black Core Phenolic
- 1/2" tops, bottoms and shelves, speckle tone Black Core Phenolic
- 3/8" sides and back, speckle tone Black Core Phenolic
- Black powder coat 120 degree opening stop hinge
- Black recessed vertical acting handle for safety and security with padlock hasp, accepts built-in locks
- Self-latching door
- 10-year warranty
- Full perimeter ventilation
- Fully assembled single unit construction
- Slope tops, finished (colored) end panels and fillers available

PART 1: GENERAL

1.01 DESCRIPTION

- A. Phenolic Locker work includes the following:
 - 1. Locker Compartments (various sizes, styles, and tier configurations)
 - 2. Component Accessories
 - a. Slope Tops
 - b. Filler Kits
 - c. Trim Kits for recessed installations
 - d. Locking Device Options
 - e. Hooks, Coat Rod Hooks, Coat Rods
 - f. Number Plates
- B. Furnish all labor and materials necessary for completion of work in this section as shown on the contract drawings and specified herein.
- C. Work in this section shall include but is not limited to:
 - 1. Locker Compartments
 - 2. Hardware for Locker compartments
 - 3. Shop drawings and working drawings
 - 4. Manufacturer's guarantee
- D. Related Work specified elsewhere shall include accessories and anchorage/blocking for attachment of compartments.

1.02 PRODUCTS

- A. Submittal of shop drawings and details for architect's approval.
- B. Colors (Doors and End-Cover Panels only) shall be selected from the manufacturer's standard range of colors.
- C. Color and hardware samples shall be submitted for approval to the architect upon request.

PART 2: PRODUCTS

2.01 MANUFACTURER

- A. Locker compartments to be supplied by ASI Storage Solutions, Eastanollee, GA, 30538.

2.02 MATERIALS

- A. Doors shall be constructed of 1/2" solid phenolic core decorative plastic laminate with multiple resin-impregnated kraft and surface sheets fused at high temperature and pressure.
- B. Side and Back Panels shall be constructed of 3/8" solid phenolic core with Folkstone Celesta decorative plastic laminate with multiple resin-impregnated kraft and surface sheets fused at high temperature and pressure.
- C. Tops, Bottoms, and Shelves shall be constructed of 1/2" solid phenolic core decorative plastic laminate with multiple resin-impregnated kraft and surface sheets fused at high temperature and pressure.
- D. End Cover Panels shall be constructed of 1/2" solid phenolic core decorative plastic laminate with multiple resin-impregnated kraft and surface sheets fused at high temperature and pressure.
- E. Slope Top Kits, Filler Kits, and Trim Kits shall be constructed of 1/2" solid phenolic core decorative plastic laminate with multiple resin-impregnated kraft and surface sheets fused at high temperature and pressure.

2.03 CONSTRUCTION

- A. Doors shall be fitted with recessed handle, number plate, padlock hasp, and optional locking device. Perimeter ventilation. Doors shall be mounted to side panel using powder coated steel piano-type

hinges and machined fasteners. Door edges shall be smooth and chamfered with corners radiused.

- B. Side Panels shall be attached to all Tops, Bottoms, and Shelves, using rust-resistant and steel fasteners. Exposed edges shall be smooth and chamfered.
- C. Tops, Bottoms, and Shelves shall be attached to all Side Panels, using rust-resistant and steel fasteners. Exposed edges shall be smooth and chamfered.
- D. The color and texture of the finish on Phenolic Lockers is determined by the selected decorative plastic laminate pattern. Color selection is allowed for Doors and End Cover Panels only; all other components are Folkstone Celesta.

2.04 HARDWARE

- A. Doors
 - 1. All Hinges shall be of powder coated steel, 120° Limited hinge
 - 2. Door Latches shall be mounted at the mid-point of each door. Hasps shall be mounted below each handle and will accept standard padlock styles.
- B. Fasteners shall be of rust resistant door hinges and latches, and handles will be mounted with rivets and/or machine screws. Hooks and number plates will be mounted with rivets.
- C. End Cover Panels will be mounted with stainless steel barrel screws.
- D. Locker Units can be banked together will stainless steel barrel screws.

PART 3: EXECUTION

3.01 PREPARATION

- A. Examine areas to receive Locker compartments for correct height and spacing of anchorage/blocking and fixtures that may affect installation of compartments. Report any discrepancies to the architect.
- B. Take complete and accurate measurements of complete installation locations.
- C. Start of work constitutes acceptance of job.

3.02 INSTALLATION

- A. Install compartments in a rigid, straight, plumb and level manners as shown on the shop drawings and manufacturer's installation instructions.
- B. Clearance at vertical edges of door shall be uniform top and bottom.
- C. No evidence of cutting, drilling and/or patching shall be visible on the finished work.
- D. Finished surfaces shall be cleaned after installation and be left free of all imperfections.

3.03 WARRANTY

- A. ASI Storage Solutions guarantees its Phenolic Lockers, properly maintained, against delamination, breakage or corrosion for 10 years from the date of receipt by the customer. If materials are found defective during that period for the reasons listed above, the material will be replaced free of charge. No credits or allowances will be issued for any labor or expenses related to the replacement of components covered under the warranty plan. All such expenses are to be borne by the buyer.

ASI Storage Solutions reserves the right to change/modify specifications at any time.



TRADITIONAL PLUS **PHENOLIC** **LOCKERS**

With the same standard features as the Traditional line, the Traditional Plus Collection is intended for more rugged applications and has matching finish on all sides and top for a finished look. Phenolic Lockers are the material of choice when a high degree of design flexibility is desired or where durability and strength

are required. These lockers are fabricated to stand the test of time. The dense components, combined with stainless steel brackets and fasteners, stand up to the most extreme conditions of moisture and humidity. Phenolic is impact, water and corrosion resistant, and does not support bacteria.

STANDARD FEATURES

- 1/2" construction throughout in 10 Black Core Phenolic colors
- Black powder coat 120 degree opening stop hinge
- Black recessed vertical acting handle for safety and security with padlock hasp, accepts built-in locks
- Self-latching door
- 10-year warranty
- Full perimeter ventilation
- Fully assembled single unit construction
- Slope tops and fillers available

PART 1: GENERAL

1.01 DESCRIPTION

- A. Phenolic Locker work includes the following:
 - 1. Locker Compartments (various sizes, styles, and tier configurations)
 - 2. Component Accessories
 - a. Slope Tops
 - b. Filler Kits
 - c. Trim Kits for recessed installations
 - d. Locking Device Options
 - e. Hooks, Coat Rod Hooks, Coat Rods
 - f. Number Plates
- B. Furnish all labor and materials necessary for completion of work in this section as shown on the contract drawings and specified herein.
- C. Work in this section shall include but is not limited to:
 - 1. Locker Compartments
 - 2. Hardware for Locker compartments
 - 3. Shop drawings and working drawings
 - 4. Manufacturer's guarantee
- D. Related Work specified elsewhere shall include accessories and anchorage/blocking for attachment of compartments.

1.02 PRODUCTS

- A. Submittal of shop drawings and details for architect's approval.
- B. Colors (Doors and End-Cover Panels only) shall be selected from the manufacturer's standard range of colors.
- C. Color and hardware samples shall be submitted for approval to the architect upon request.

PART 2: PRODUCTS

2.01 MANUFACTURER

- A. Locker compartments to be supplied by ASI Storage Solutions, Eastanollee, GA, 30538.

2.02 MATERIALS

- A. Doors shall be constructed of 1/2" solid phenolic core decorative plastic laminate with multiple resin-impregnated kraft and surface sheets fused at high temperature and pressure.
- B. Side and Back Panels shall be constructed of 1/2" solid phenolic core with Celesta decorative plastic laminate with multiple resin-impregnated kraft and surface sheets fused at high temperature and pressure.
- C. Tops, Bottoms, and Shelves shall be constructed of 1/2" solid phenolic core decorative plastic laminate with multiple resin-impregnated kraft and surface sheets fused at high temperature and pressure.
- D. End Cover Panels shall be constructed of 1/2" solid phenolic core decorative plastic laminate with multiple resin-impregnated kraft and surface sheets fused at high temperature and pressure.
- E. Slope Top Kits, Filler Kits, and Trim Kits shall be constructed of 1/2" solid phenolic core decorative plastic laminate with multiple resin-impregnated kraft and surface sheets fused at high temperature and pressure.

2.03 CONSTRUCTION

- A. Doors shall be fitted with recessed handle, number plate, padlock hasp, and optional locking device. Perimeter ventilation. Doors shall be mounted to side panel using powder coated steel piano-type

hinges and machined fasteners. Door edges shall be smooth and chamfered with corners radiused.

- B. Side Panels shall be attached to all Tops, Bottoms, and Shelves, using rust-resistant and steel fasteners. Exposed edges shall be smooth and chamfered.
- C. Tops, Bottoms, and Shelves shall be attached to all Side Panels, using rust-resistant and steel fasteners. Exposed edges shall be smooth and chamfered.
- D. The color and texture of the finish on Phenolic Lockers is determined by the selected decorative plastic laminate pattern.

2.04 HARDWARE

- A. Doors
 - 1. All Hinges shall be of powder coated steel, 120° Limited hinge
 - 2. Door Latches shall be mounted at the mid-point of each door. Hasps shall be mounted below each handle and will accept standard padlock styles.
- B. Fasteners shall be of rust resistant door hinges and latches, and handles will be mounted with rivets and/or machine screws. Hooks and number plates will be mounted with rivets.
- C. End Cover Panels will be mounted with stainless steel barrel screws.
- D. Locker Units can be banked together will stainless steel barrel screws.

PART 3: EXECUTION

3.01 PREPARATION

- A. Examine areas to receive Locker compartments for correct height and spacing of anchorage/blocking and fixtures that may affect installation of compartments. Report any discrepancies to the architect.
- B. Take complete and accurate measurements of complete installation locations.
- C. Start of work constitutes acceptance of job.

3.02 INSTALLATION

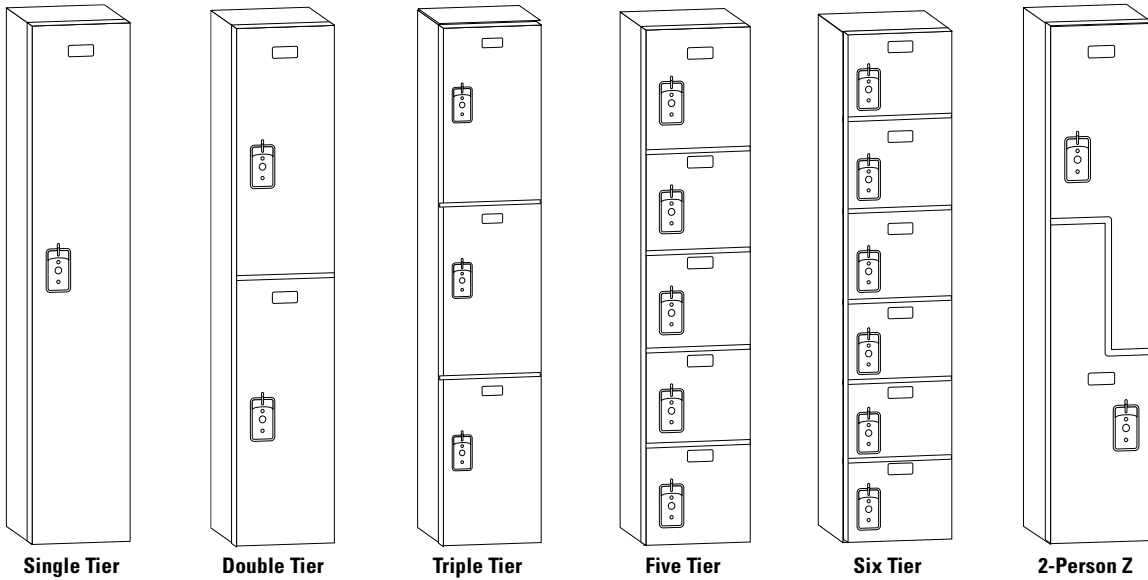
- A. Install compartments in a rigid, straight, plumb and level manners as shown on the shop drawings and manufacturer's installation instructions.
- B. Clearance at vertical edges of door shall be uniform top and bottom.
- C. No evidence of cutting, drilling and/or patching shall be visible on the finished work.
- D. Finished surfaces shall be cleaned after installation and be left free of all imperfections.

3.03 WARRANTY

- A. ASI Storage Solutions guarantees its Phenolic Lockers, properly maintained, against delamination, breakage or corrosion for 10 years from the date of receipt by the customer. If materials are found defective during that period for the reasons listed above, the material will be replaced free of charge. No credits or allowances will be issued for any labor or expenses related to the replacement of components covered under the warranty plan. All such expenses are to be borne by the buyer.

ASI Storage Solutions reserves the right to change/modify specifications at any time.

CHOICE OF STYLES



LOCKER SIZES

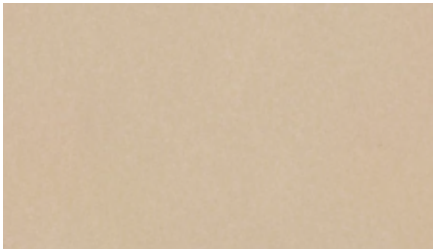
LOCKER HEIGHTS										
SIZES (WIDTH X LENGTH)	SINGLE TIER		DOUBLE TIER		TRIPLE TIER		FIVE TIER	SIX TIER	2-PERSON Z	
12" x 12"	60"	72"	60"	72"	60"	72"	60"	72"	60"	72"
12" x 15"	60"	72"	60"	72"	60"	72"	60"	72"	60"	72"
12" x 18"	60"	72"	60"	72"	60"	72"	60"	72"	60"	72"
15" x 15"	60"	72"	60"	72"	60"	72"	60"	72"	60"	72"
15" x 18"	60"	72"	60"	72"	60"	72"	60"	72"	60"	72"
18" x 18"	60"	72"	60"	72"	60"	72"	60"	72"	60"	72"

CUSTOM SIZES AND STYLES AVAILABLE, CONSULT FACTORY FOR DETAILS

CHOICE OF COLORS

COLOR-THRU PHENOLIC COLORS

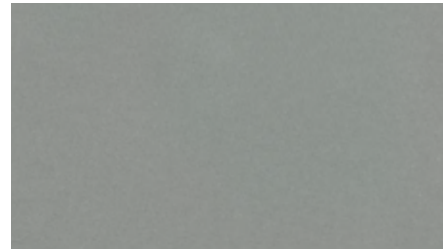
Premium material where surface color goes through and through



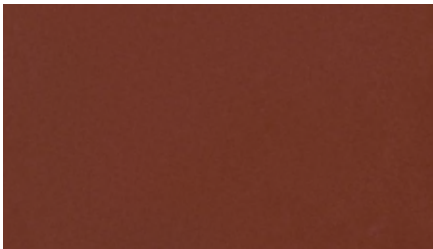
Hazelnut 4450C



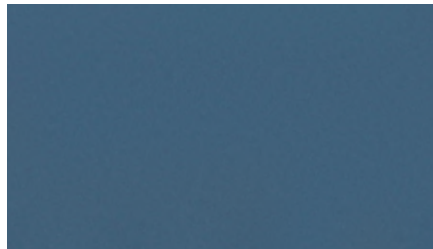
Sage 6450C



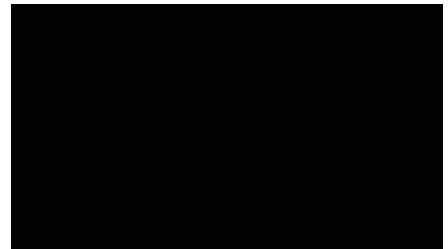
Gray Mist 3450C



Cinnamon 5450C



Persian Blue 7450C



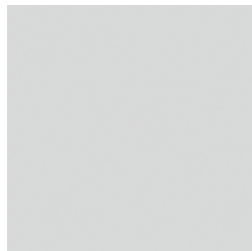
Black 2000C

BLACK CORE PHENOLIC COLORS

More economically priced than color-thru yet great for any environment



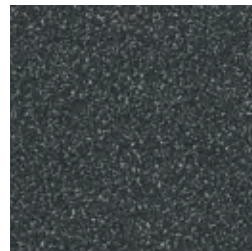
Neutral Glace #1130



Silver Gray #3000



Dove Gray #3010



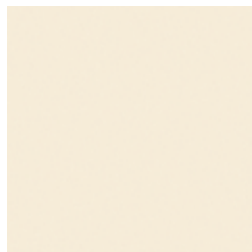
Graphite Grafix #3020



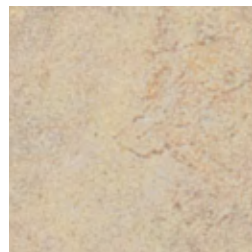
Desert Zephyr #4583



Folkstone Celesta #3300



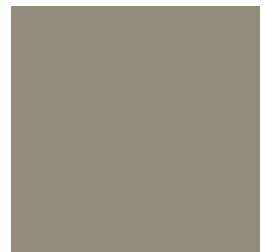
Almond #4000



Natural Canvas #4410



Tungsten EV #4801



Taupe #9096

ONLY ASI CAN SUPPLY EVERYTHING FOR YOUR WASHROOM

And only ASI Group offers the industry's most cutting-edge hand dryers, soap dispensers, baby changers, paper towel dispensers, partitions, lockers and much, much more.



Distributed by:



© 2015 ASI Storage Solutions, an ASI Group Company

ASI Storage Solutions
2171 Liberty Hill Road, Eastanollee, GA 30538
Tel: 706.827.2720 Fax: 706.827.2710
E-mail: info@asi-storage.com
Web: asi-storage.com

ASI98120115