

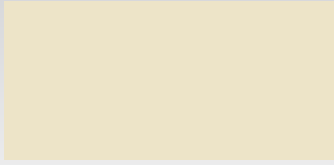
# POWDER COATED COLOR SELECTION CHART



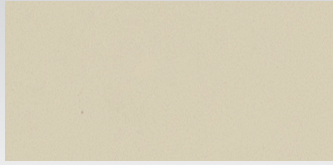
71 BEACH SAND\*



22 SKY BLUE



53 IVORY



72 ALMOND



70 BURGUNDY



78 ROYAL BLUE



52 TAN



51 SAND



43 DARK GREEN



30 LIGHT GRAY



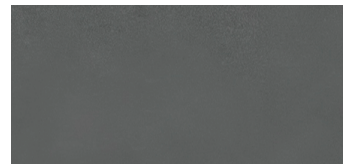
90 TERRA COTTA



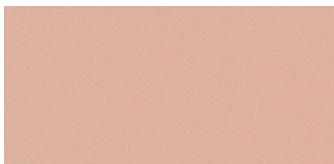
50 BROWN



21 LIGHT BLUE



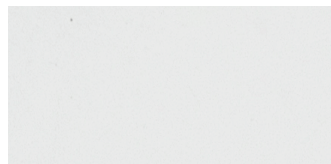
31 DARK GRAY



73 AMERICAN ROSE



67 BLACK



66 WHITE



65 SIGNAL RED

*Color chips show approximate color*

*\*Additional charge*

## SATIN STAINLESS STEEL "Intrepid Series"

*Waterproof • Sanitary • Steam Proof • Corrosion Proof • People Proof*



[www.allamericanmetal.com](http://www.allamericanmetal.com)

**ALL AMERICAN METAL CORP.**

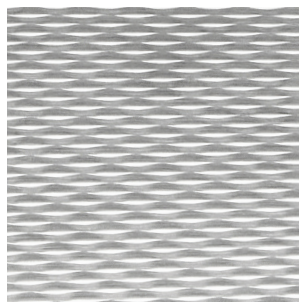
P.O. BOX #108

200 BUFFALO AVENUE EXTENSION

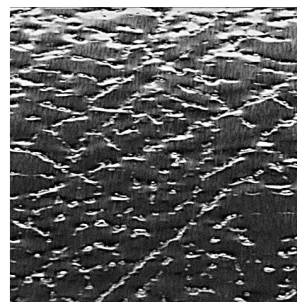
FREEPORT, NY 11520

516.623.0222 FAX 516.623.5809

[www.allamericanmetal.com](http://www.allamericanmetal.com)



DIAMOND TEXTURED  
STAINLESS STEEL



LEATHER GRAIN TEXTURED  
STAINLESS STEEL



SATIN STAINLESS STEEL

**FIVE DAY DELIVERY**  
on baked enamel

**FROM CONCEPT TO COMPLETION**, our solutions are engineered to meet the specifications of any project, large or small. With an emphasis on practical design, we are pleased to offer unparalleled product flexibility and creative techniques, naturally resulting in a comfortable and stylish environment.

www.allamericanmetal.com  
ALL AMERICAN METAL CORP



**ALL AMERICAN METAL CORP.**  
P.O. BOX #108  
200 BUFFALO AVENUE EXTENSION  
FREEPORT, NY 11520  
516.623.0222 FAX 516.623.5809  
www.allamericanmetal.com



ALL AMERICAN METAL CORP

www.allamericanmetal.com

**IMMEDIATE DELIVERY**  
on stainless steel partitions

